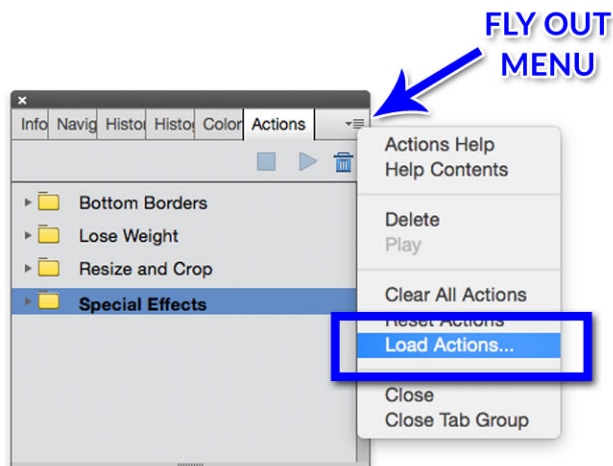




Installing the PSE Toolkit



STEP 1

Open Elements, then go to **Window > Actions** in your main menu to open your actions panel.

STEP 2

Click the little Fly Out Menu in the upper right corner of the actions panel. (looks like 3 grey lines)

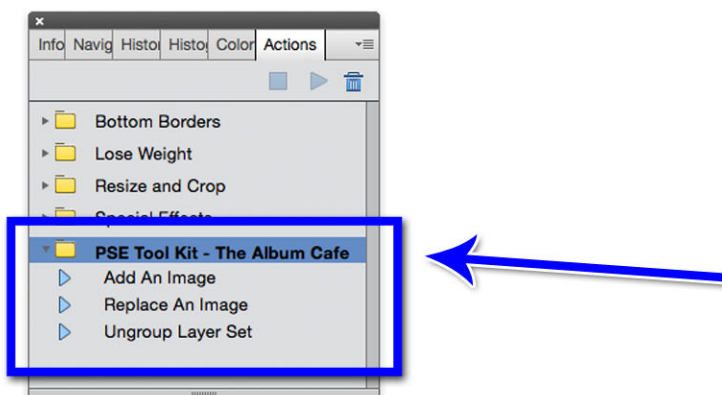
STEP 3

Select "Load Actions".

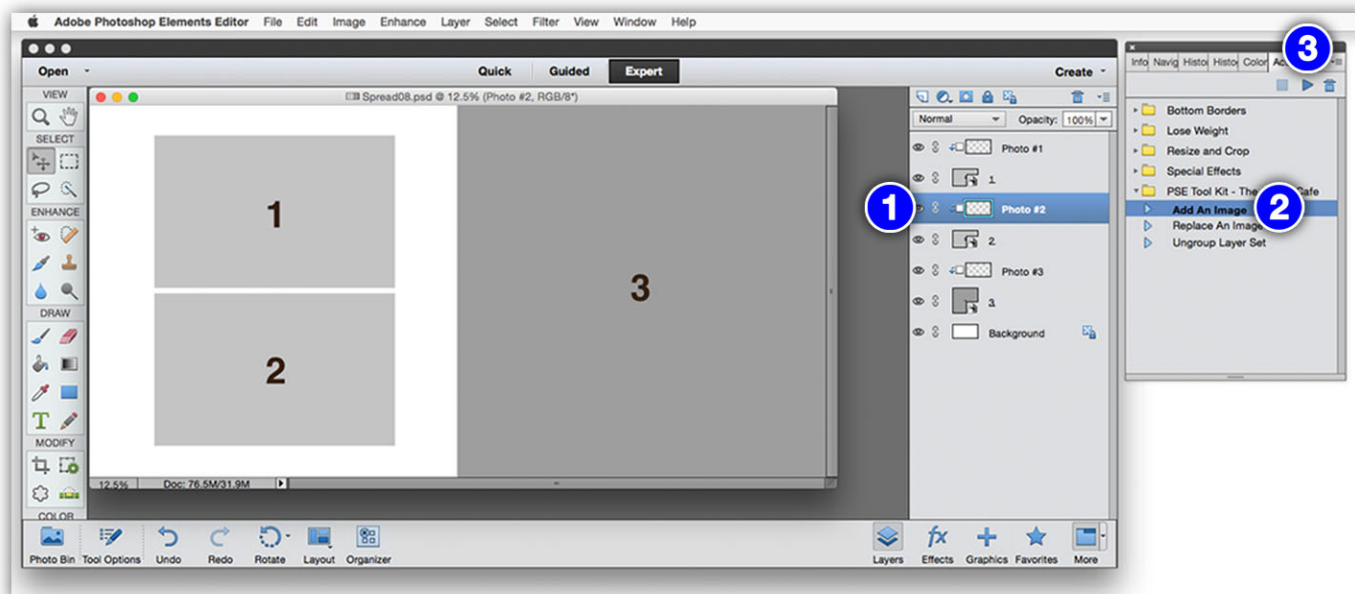
STEP 4

Navigate to the action set that you downloaded (the file name will end in ".atn") and select it.

Your new actions will appear! Yay!



Adding Images



STEP 1

Select the “Photo #” layer for where you want the image to be. In the sample shown we’re going to add an image to the #2 spot - so we have the layer called “Photo #2” selected in the layers palette.

STEP 2 & 3

(2) Select the action called “Add An Image” and (3) press the play button at the top of the actions palette. Your computer will prompt you to choose an image.

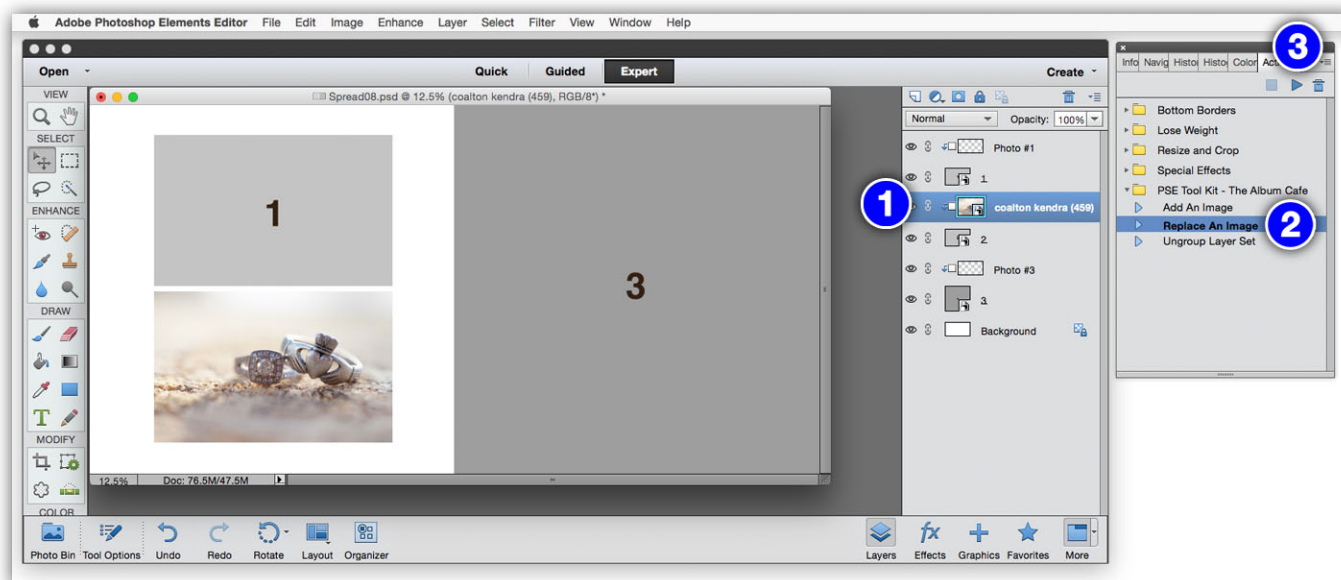
STEP 4

The image will appear already centered inside the “opening” on the page. All you need to do is resize the image as needed.

HINT: Some versions of Elements require you to hold down the “Shift” key while dragging from one of the four corners while resizing the image to keep it in proportion. (to not get “squished”)



Replacing an Image



STEP 1

Select the layer of the photo you wish to switch out in the layers palette.

STEP 2

Select the action called "Replace An Image".

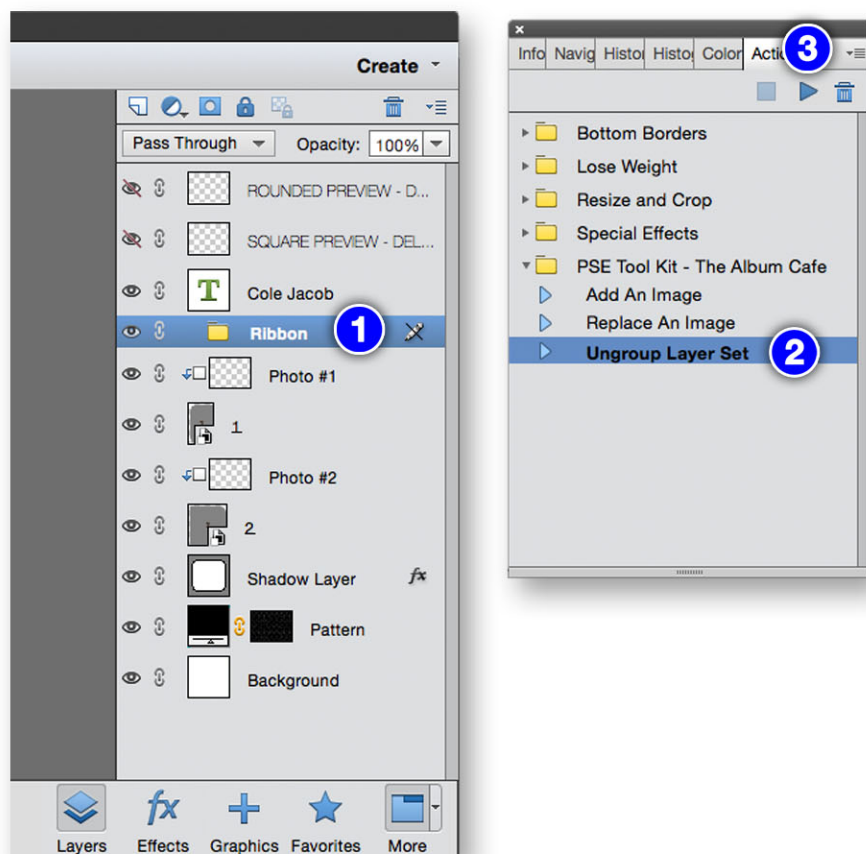
STEP 3

Press the play button at the top of the actions palette. Your computer will prompt you to choose a new image.

NOTE: If you choose a photo that is a different size than the original chosen image, you may need to resize it a little.



Ungroup a Layer Set



STEP 1

Select the layer group in the layers palette. (it will look like a folder)

STEP 2

Select the action called "Ungroup Layer Set".

STEP 3

Press the play button at the top of the actions palette. You will see all the layers that were previously contained in the folder "pop out". You can now access those layers to change colors, etc.

